

BIONALES



**Citizens for Regional Agriculture and Food
Association**

**NGO/CSO based in Frankfurt/Main, Hessen,
Germany**

**Dr. Susanne von Münchhausen |
susanne.muenchhausen@hnee.de**

**Dr. Katharina Schulenburg |
k.schulenburg@bionales.de**

www.bionales.de



Expression of interest to join an Horizon multi-actor proposal consortium

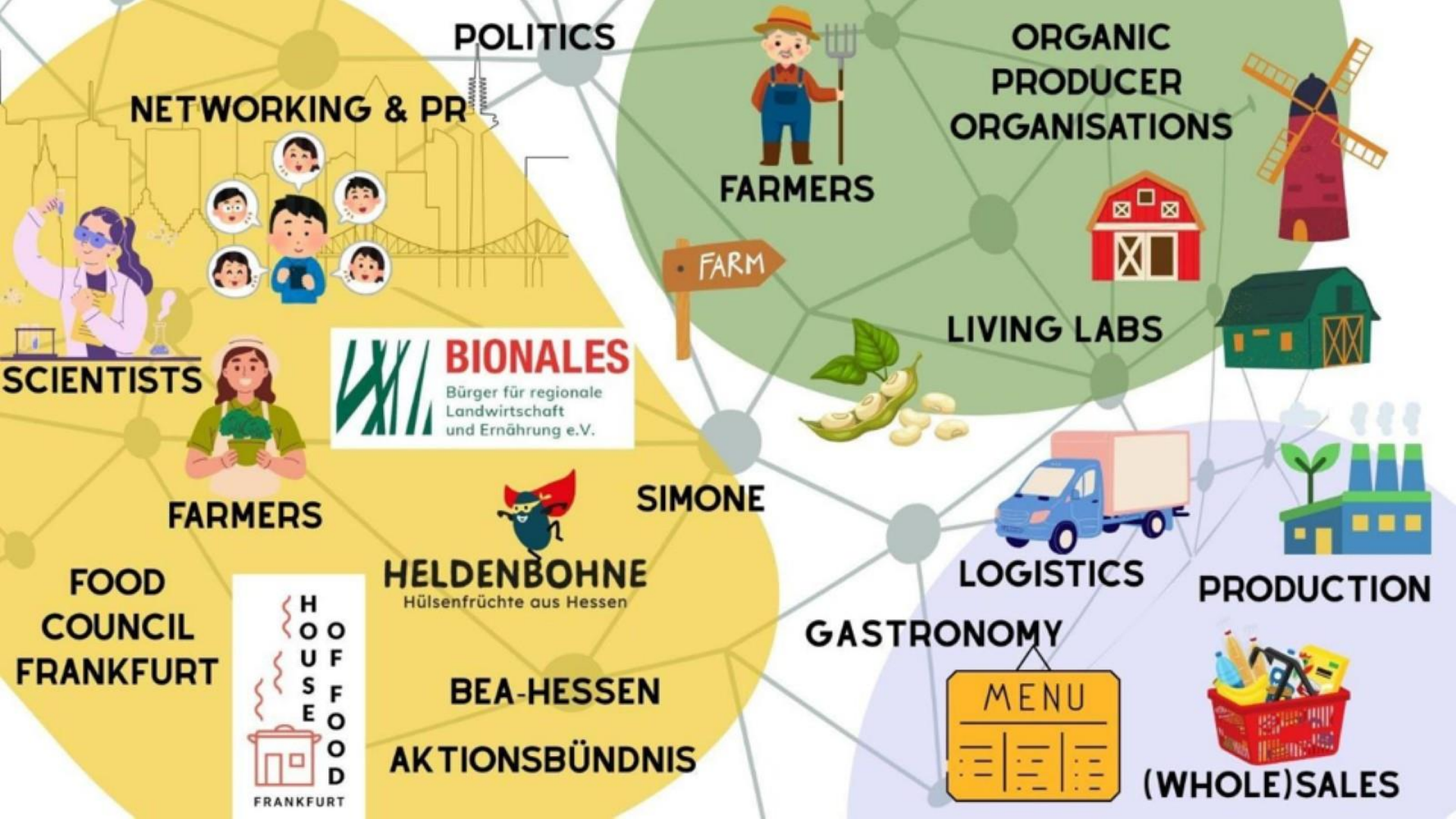
Areas of interest include:

- Protein crops from production to consumption
- Value chains (F3F),
- Organic farming with a focus on sustainability and profitability
- One Health

Soil Mission

- LivingLab for organic farming – from Farm to Fork
- Protein crops, nitrogen balance
- Networking, civil society involvement





POLITICS

NETWORKING & PR

ORGANIC PRODUCER ORGANISATIONS

FARMERS

FARM

LIVING LABS

SCIENTISTS



BIONALES
Bürger für regionale
Landwirtschaft
und Ernährung e.V.

FARMERS

SIMONE



HELDENBOHNE
Hülsenfrüchte aus Hessen

LOGISTICS

PRODUCTION

FOOD COUNCIL FRANKFURT



H
O
U
S
F
O
O
D
FRANKFURT

BEA-HESSEN
AKTIONSBÜNDNIS

GASTRONOMY



MENU

(WHOLE)SALES

WE OFFER



EDUCATION



BIONALES

Bürger für regionale
Landwirtschaft
und Ernährung e.V.



**POLICY
CONTEXT**



TEAM



**SSH, Gender
dimension**



**LIVING
LAB**



LOGISTICS



**EVENTS
& FAIRS**



PR



**REGIONAL
NETWORK**

Let's explore
options for a
potential
collaboration!