



Water And Soil Security to Empower Rural residents in Lippe

WASSER-Lippe



PATHWAYS2RESILIENCE

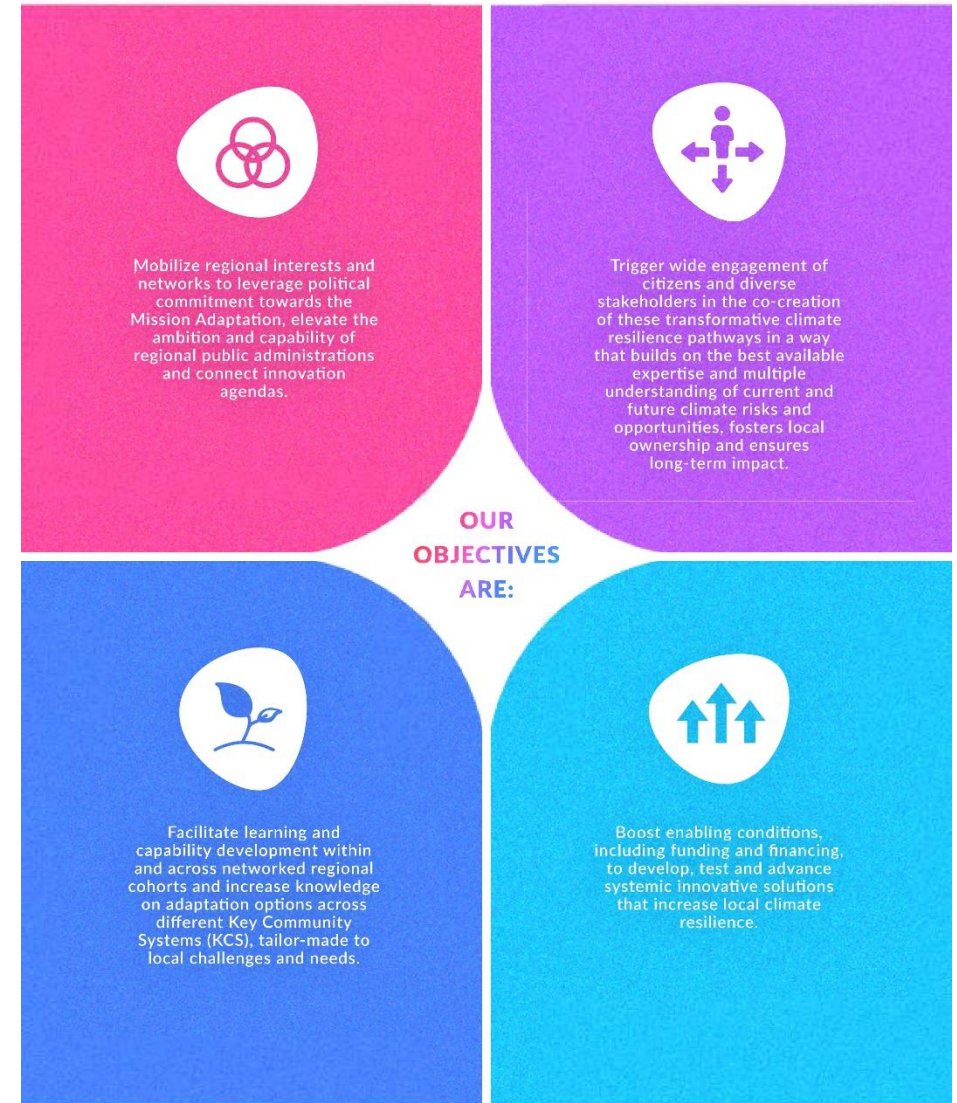


KREIS
LIPPE

Heimat geben. Zukunft bieten.

Pathway2Resilience

- **Purpose:** Strengthen climate resilience in European regions by tackling root causes of vulnerability through transformative adaptation.
- **Approach:** Empower regions through systems innovation, capacity building, and co-designed long-term resilience pathways.
- **Scale & Duration:** Five-year initiative led by Climate KIC with a consortium of 14 partners.
- **Funding & Reach:** Across two calls, P2R will support at least 100 regions/communities with a total budget of €21 million, offering up to €210,000 per region through subgrants lasting up to 18 months.
- **Equity Focus:** Prioritizes less developed and highly climate-vulnerable regions across EU and Associated Countries.
- **Outcomes:** Regions deliver Climate Resilience Strategies, Action Plans, and Investment Plans, validating RRJ and AIC frameworks.

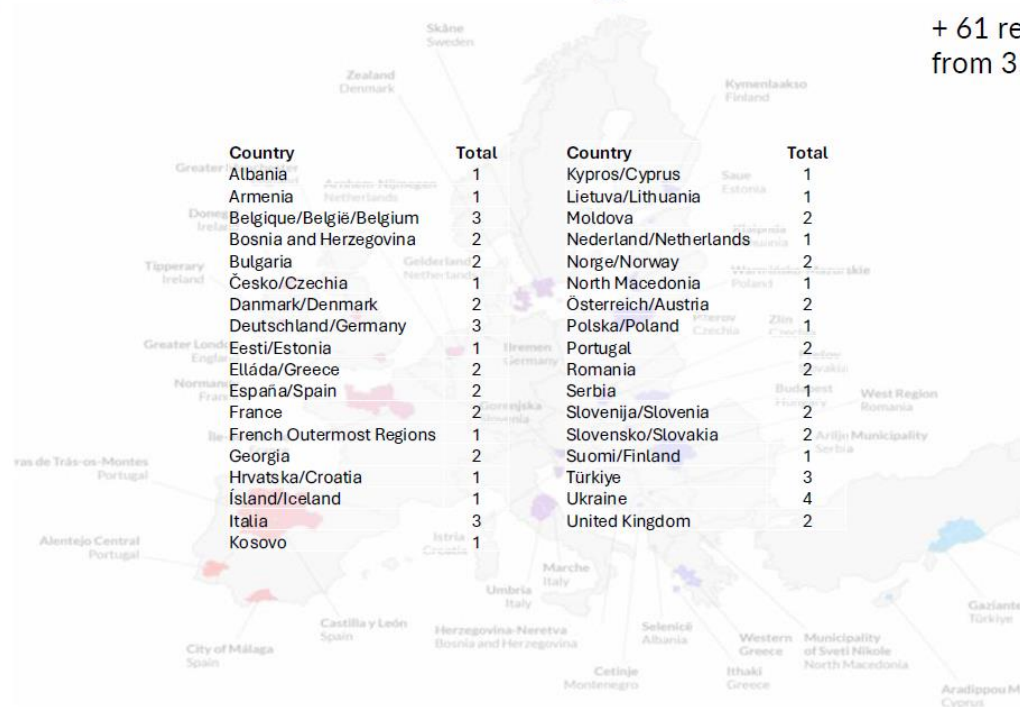


Regions Call 2

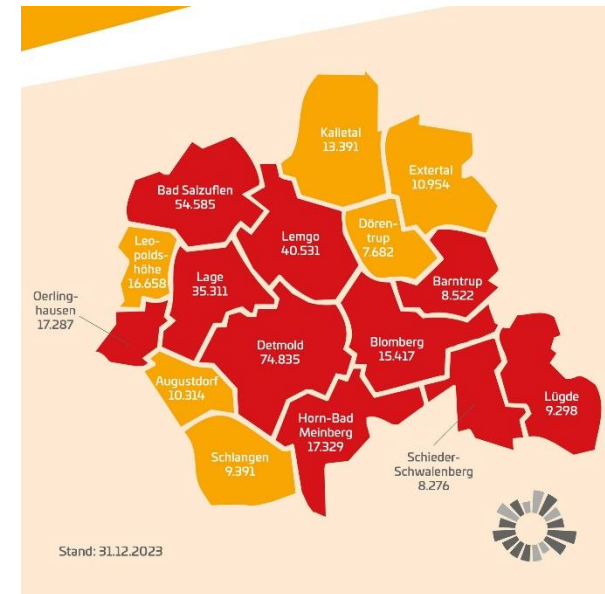


2nd cohort of P2R regions

+ 61 regions & communities from 35 countries



Project Start: 1st of January 2026



The project in the county of Lippe



- Improve quality of life in the Lippe district while addressing climate change adaptation issues
- Strengthen climate resilience in Ostwestfalen-Lippe
- Key focus areas: 1. flood protection and soil erosion, 2. water supply (+ public health as a cross cutting issue)
- Protect natural resources and critical infrastructure
- Ensure a safe and clean water supply
- Promote cooperation among stakeholders (such as from the agricultural sector and local water management) and prepare the population for extreme events
- Use integrated, innovative, and interdisciplinary approaches (relying on the toolbox from the P2R-Programm)
- Develop and test practical models based on:
 - ✓ Regional risk analyses
 - ✓ Spatial strategies for prevention, adaptation, and risk reduction
 - ✓ Risk communication and dialogue
 - ✓ Resilient crisis management and governance structures

Partners / What are we hoping for



- **Ethics & Stakeholder Engagement Experts**
→ Specialists, municipalities, or consultants with experience in facilitating ethically sensitive discussions across diverse stakeholder groups (e.g. agriculture, public water supply, civil society)
- **Data Gathering & Analytics Specialists**
→ Partners with expertise in collecting, analyzing, and integrating environmental data, including groundwater levels, surface water, water quality, and microclimate indicators (outdated Data)

Contact



Dorothea Streich

Kreis Lippe

+49 5231 / 62-6610

d.streich@kreis-lippe.de

