

EILAT

*Municipal EV Charging
Stations for Greener Mobility*



SMART CITY



 **EU MISSION LABEL**

CLIMATE-NEUTRAL & SMART CITIES

EILAT



Salomé Zajbert
Grant Manager
Eilat-Eilat Environmental Unit

Eilat is the southernmost city in Israel, distant from other large communities and the country's center.

- 68,000 Residents
- 3,000,000 Tourist every year
- 100% RE during day time



EILAT

SMART CITY

The Vision Climate Neutrality by 2030





The Vision Climate Neutrality by 2030

Project idea and objectives

- Develop a **comprehensive municipal EV charging ecosystem**
- Support Eilat's transition to **climate-neutral mobility**
- Ensure **accessible & affordable** charging infrastructure
- Introduce **mobility profiling, digital city twins & public awareness campaigns**
- **Inclusive approach** addressing diverse mobility needs (tourists, residents, workplaces)



Expected Impact

- **Lower emissions and improved air quality**
- **Scalability and replicability** to other arid urban environments
- **Data-driven urban planning** via digital twin simulations
- **Enhanced citizen engagement** through participatory planning
- **Stronger private-public collaboration** for innovative charging solutions



The Vision Climate Neutrality by 2030



Partners and collaboration needs:

Looking for coordinators and consortium partners open to joining **2ZERO & CCAM** calls

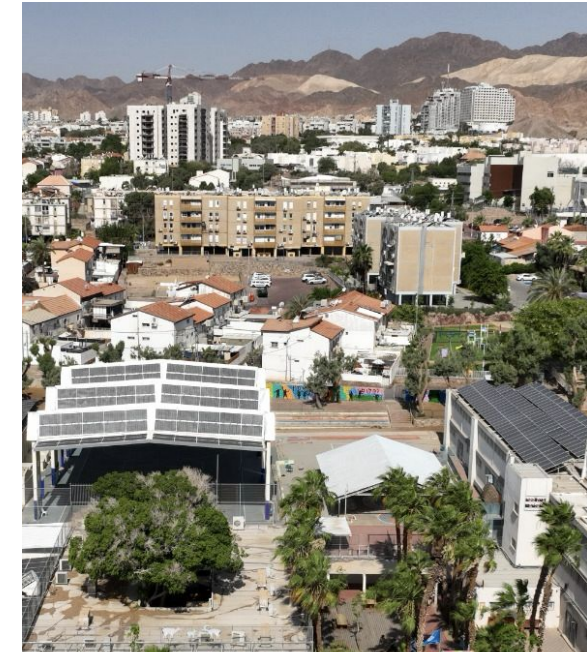
- **Academic institutions** working on: Smart cities, EV mobility, energy systems
- **Private sector:** energy mobility digital tools provider, tech firms
- **Other cities** interested in electric mobility

We propose **Eilat as a demo site to test innovative solutions.**

Our dedicated **smart city team** takes part in tasks related to the pilot management, regulation, citizens' welfare, citizen engagement, dissemination, relations with policymakers and other cities.



The Vision Climate Neutrality by 2030



Thank you

Please contact:

adminEUprojects@eilat.muni.il



EILAT

SMART CITY

The Vision Climate Neutrality by 2030