



A project partner for
compliant Data & AI innovation
HORIZON-CL4-2025-03-DATA-13

Successful R&I in Europe 2025
12th European Networking Event

March 2025

Anastasia Walter

End user for your project

- EU topic targets business and challenges and risks of implementation of the new regulations – the continually increasing number of regulations is a mayor pain-point within the finance industry!
- German insurance and financial services group serving millions of customers, focused on health, life and property insurance
- a large enterprise with headquarters in Dortmund and Hamburg
- *Specifics*: wide product portfolio and strong regional presence
- has a long tradition: brand has existed since 1907, but the company's oldest roots go back to 1875.
- Grown, complex IT infrastructure & data landscape

Our resources:

- Tribe Data & Analytics
- Two centres of Excellence:
 - for Data Governance and for AI
- Implemented Data Governance Suite (incl. Data Catalog)
- Experts for EU, national and sector specific legislation and compliance

We offer to a project consortium:

Provide sector-specific requirements for technological solutions

Deliver use cases from business

Testing, validation, deployment of your technologies in real operational environment - *support development of the project results up to TRL 8*

Facilitate the broad user training and roll out

Early adopter customer for your technology

Upscaling possibility withing different insurance segments

Topic of Interest: HORIZON-CL4-2025-03-DATA-13

Fostering Innovative and Compliant Data Ecosystems (IA)

Challenge: **Complex company infrastructure leads to fragmented compliance processes.**

Solution: **Streamlining and linking compliance processes for insurance & finance business**

Challenge: **Continuously expanding EU legislation and reporting obligations.**

Solution: **Automating compliance processes and reporting.**

Challenge: **Inefficient data collection and processing.**

Solution: **Deploying advanced technologies for data collection, sharing, and analytics.**

Challenge: **Limited real-world data for testing, validation, and addressing ethical considerations and biases.**

Solution: **Utilizing technologies and approaches for generating and managing synthetic data and leveraging its potential effectively.**

Challenge: **cost and resource intensive implementation of compliant AI tools**

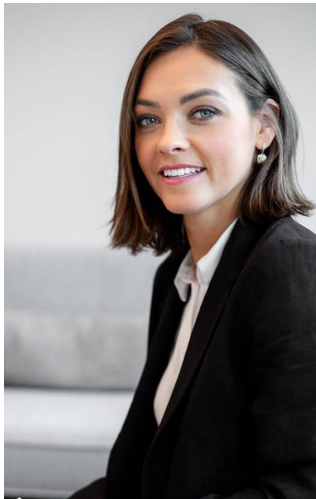
Solution: **Building competencies for rollout and upscaling in the development and deployment of regulatory-compliant AI services also to other insurance segments**

we'd like to build cooperation with

- **Universities & research centres** research in areas of data and AI, ML, SSH (socio-technological systems, ethics)
- **Technology developers** (large, SMEs, start-ups)
- **Training providers** to support capacity building and rollout and upscale of compliant technologies
- **Integration partners** to support integration of innovative technologies into our infrastructure and support deployment

**to build a consortium
of different stakeholder types
and an innovation eco-system**

Contact



Anastasia Walter

*Coordinator for Research, Development & Innovation
Grant Manager*

SIGNAL IDUNA Group

Anastasia.Walter@signal-iduna.de

Phone [+49 40 4124 3198](tel:+494041243198)

Mobile [+49 176 56901480](tel:+4917656901480)