



**UNIVERSITY OF APPLIED
SCIENCES AND ARTS**

Security and Privacy of LLM integrations

Dr. Ing. Koen Gilissen
Successful R & I in Europe 2025
Cluster 4: Digital Technologies
06.03.2025

<https://pxl-research.be/about>



FACTS & FIGURES



RESEARCH AND SUPPORT TO INNOVATION SERVICES

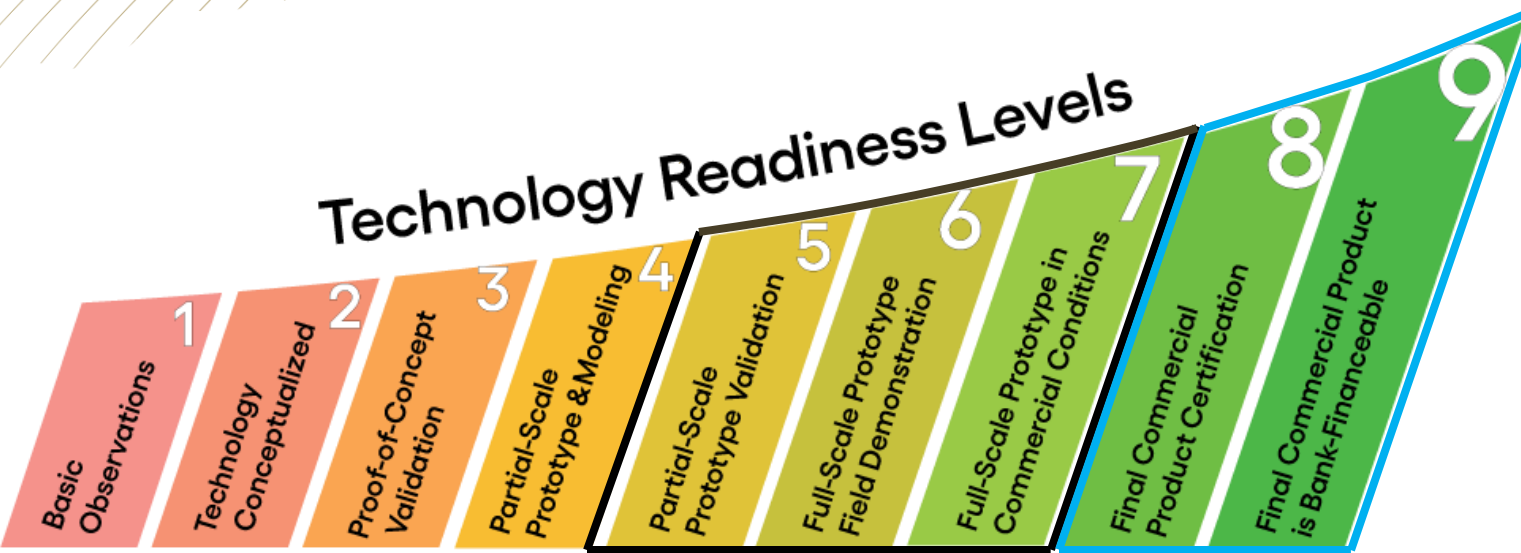


+ 49,9%
GROWTH IN EXTERNAL FUNDING FOR A TOTAL OF **4.985.655,4**



PXL Smart ICT

Technology Readiness Levels

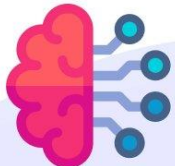


Collaboration with industry



AIDOPT

Van computer vision tot predictive analytics, AI assistants en agents – match jouw innovatie in AI & data met de state-of-the-art!



CYBERSECURITY

Cybersecurity en privacy is geen optie maar een recht. Security by design start bij jou!

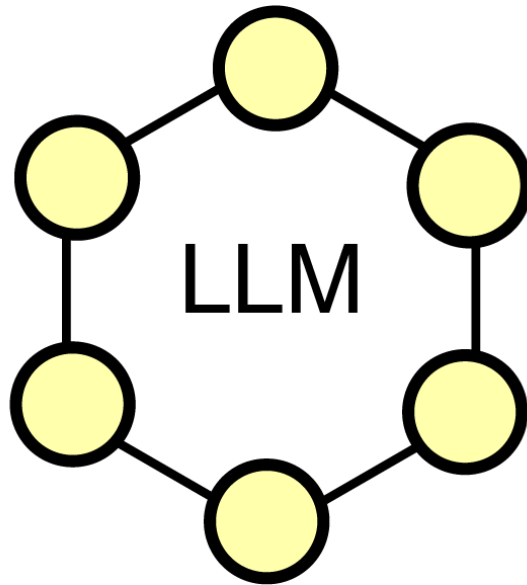


CIVIC TECH

Duurzaam digitaal? Een ecosysteem om veilige en duurzame applicaties te bouwen: CodeForBelgium!



Large Language Models



- New leap in digital transformation
- Unseen potential
- Cross-sectoral applicability

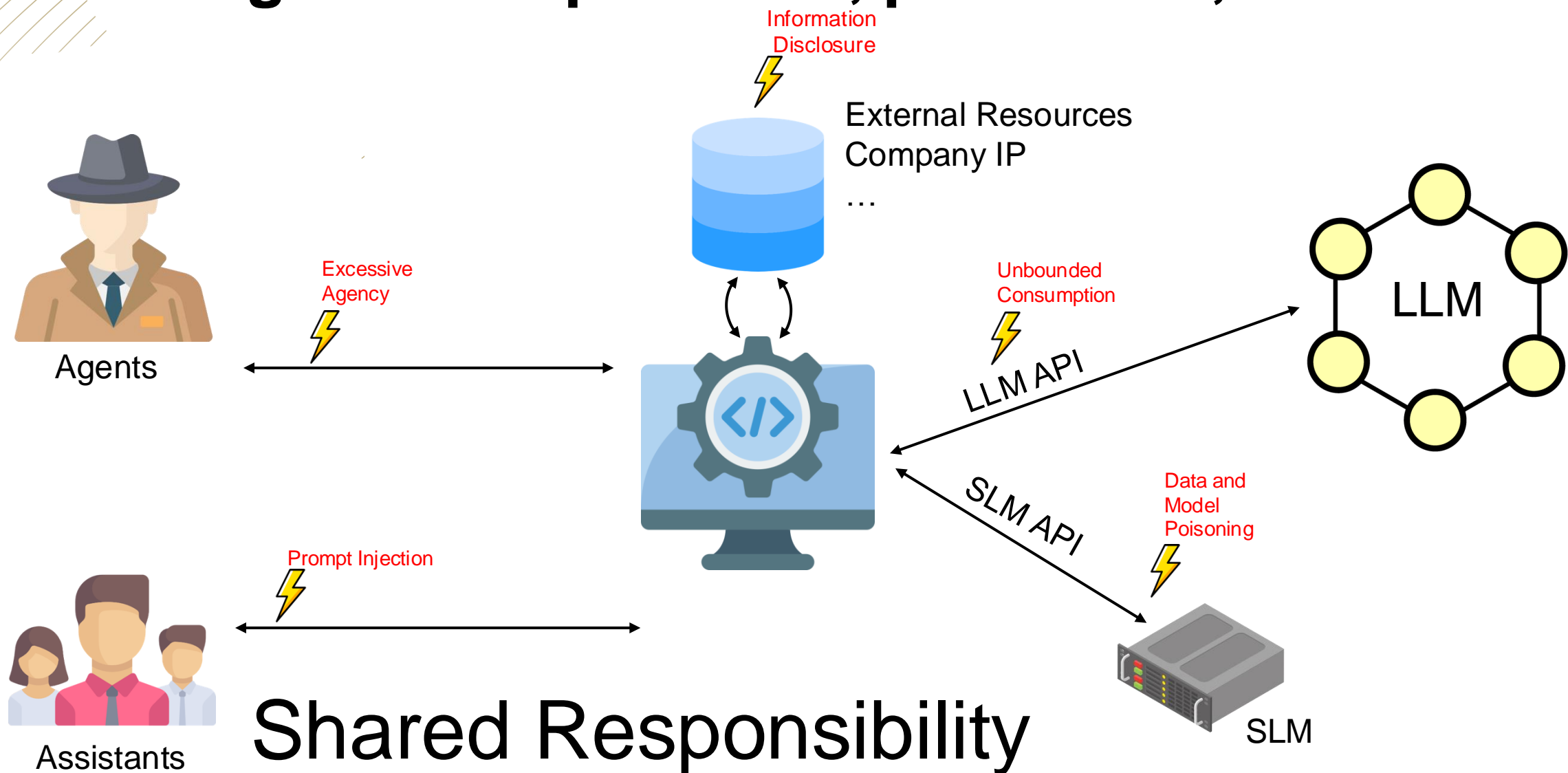


- New challenges: Security & Privacy
- New '*attack surfaces*'



- Financial consequences
- Reputation damage
- Legal consequences

LLM Integration in products, processes, services



We are looking for...



Academic Partners



Industry Partners



DIGITALEUROPE 

Interreg
Europe



 cornet

European confirmed investments

PRESS RELEASE | Publication 11 February 2025

EU launches InvestAI initiative to mobilise €200 billion of investment in artificial intelligence

PRESS RELEASE | Publication 04 July 2024

Commission to invest over €210 million in cybersecurity, digital capacities and technology under the Digital Europe Programme

Thank you for listening



Dr. Ing. Koen Gilissen



koen.gilissen@pxl.be



<http://www.linkedin.com/in/koengilissen>