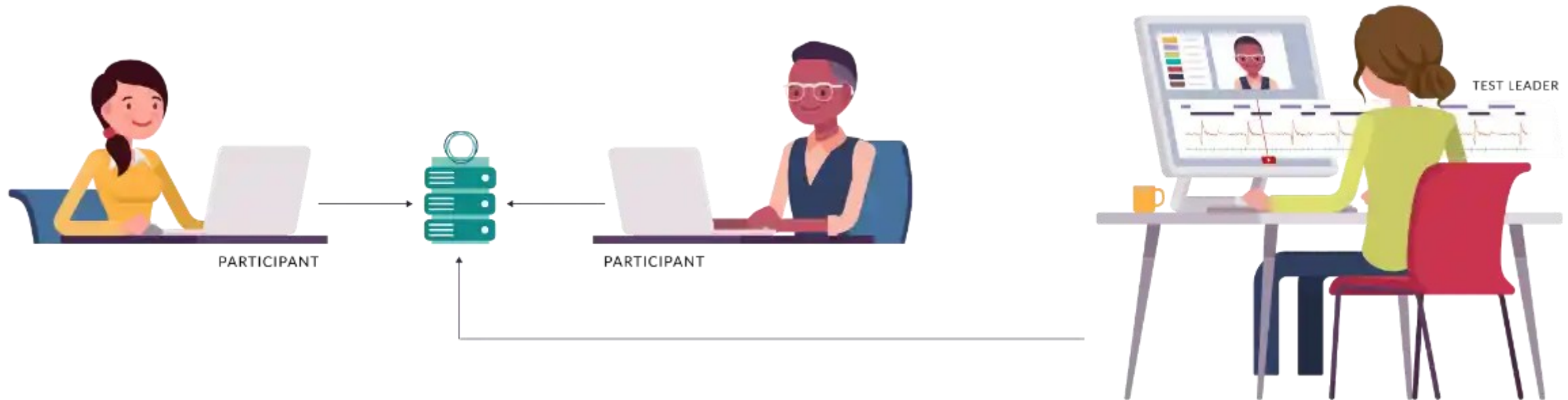


Noldus Information Technology

Platform for Multimodal Sensor Data Integration and Smart Analysis



Who we are:

Noldus Information Technology

- Creates innovative tools for measuring behavior
 - Customers: Researchers in neuroscience, UX/human factors, psychology, training, behavioral economics
 - Founded 35+ years ago, 175 employees
 - Based in Wageningen (NL), colleagues in 9 countries
 - 12000 customers in 100 countries
-
- Contact:
 - › Andrew.Spink@noldus.com
 - › Grants officer
 - › nl.linkedin.com/in/andrewspink



Noldus Information Technology

Our expertise

- Professional software and hardware development
- Data integration and synchronization, sensor fusion
- AI/machine learning, analysis, signal processing, statistical analysis
- Audio-Video, data visualization, tracking technologies
- Behavioral methodology
- ISO 27001 certified for information security



Project topics

NoldusHub

Looking for projects in which we can further develop NoldusHub:

- Minimum viable product recently released
- Integration, synchronization and analysis of multimodal sensor data
- Eye-tracking, facial expressions, emotions in voice, physiology, movement, EEG, screen capture, video, etc
- Robust, easy-to-use system so that scientists can focus on their research

Applications:

- Emotions of someone using a website (UX research)
- Stress of someone interacting with a robot (HF)
- Mental workload of a pilot receiving training



Project topics

Calls

Horizon Europe:

- Health calls — psychology, brain diseases, also for preclinical research (IHI)
- Digital — Human-machine interaction, Human-robot interactions, sensor-technologies, UX
- Mobility — Human factors etc related to transport (CL5), pilot assistance, driving behavior, human-tech interaction

Other:

- Interreg
- EFRO (EFRD)
- Eureka, e.g. ITEA, Eurostars
- Any other relevant calls in which we can receive funding

Experience:

- Over 160 collaborative projects, Dozens of Horizon/FP projects



Project partners

What we are looking for

Partners who are:

- Researchers who are potential end-users of NoldusHub and/or providers of training data for AI
- Technology companies who are developing sensors and algorithms which we might want to integrate into the platform.
- Coordinating a project

